

Important Notes

You may receive both incentives (the rebate & the loan) but you must request both and provide proper documentation.

When applying for the low-interest loan, you will need to provide North Western Electric with the following documentation:

- A copy of the legal description of your property from your deed.
- A copy of the invoice showing the total amount of the installed cost of the system.
- The model and serial number of the unit that is being installed.

When requesting the rebate, you will need to provide North Western Electric with a System/Energy Analysis (Heat Loss/Gain) form **PRIOR** to installation of the system. Following installation of the system, a North Western Electric employee will visit your home to verify the proper equipment was installed.

REMINDER:

**TO QUALIFY FOR OUR
INCENTIVES, APPROVAL
FROM NORTH WESTERN
ELECTRIC IS REQUIRED
BEFORE INSTALLATION OF
ANY SYSTEM**



A Touchstone Energy® Cooperative
The power of human connections

04125 State Route 576
P O Box 391
Bryan, OH 43506

Phone: 419-636-5051
Toll Free: 1-800-647-6932
Fax: 419-636-0194
Website: www.nwec.com

**NORTH WESTERN
ELECTRIC
COOPERATIVE**

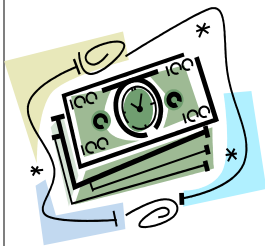
2011 Heating & Cooling Incentives



**Telephone: 419-636-5051
Toll Free: 1-800-647-6932**

Rebates & Low-Interest Loans

Replacing or adding to your home heating & cooling systems can save you money over time but initially can be very costly. North Western Electric Cooperative



would like to help. We offer incentives to those members replacing their existing

heating/cooling system with a geothermal system or those who are installing an all electric air-source heat pump system. The incentives include rebates paid direct to our residential members and bill credits for our commercial members. Low-interest loans are also available for up to \$10,000. (Certain conditions and restrictions apply.) To qualify for the incentives, contact our office **BEFORE** installation of the system begins.

Program Details

Geothermal Heating & Cooling

The most efficient and economical resource for heating and cooling your home is right in your own backyard!

Residential Rebate - \$600.00:

- The unit must provide 100% of the heat, without the use of auxiliary electric resistance heating, when the outside air temperature is 5°F and inside temperature is 70°F.
- Load calculations must be based on industry accepted standards for this area.
- Emergency back-up must be electric heat.
- Limited to 1 rebate per meter/service location.
- Must not be replacing a current system of the same type.
- System/Energy Analysis (Heat Loss/Gain) forms must be submitted to North Western Electric for approval **PRIOR** to installation.

Commercial Rebate - Bill Credits:

- Same qualifications/restrictions as above
- Paid out as bill credits over first 12 months of operation

Air Source Heat Pumps

Can be as much as twice as efficient as an existing fossil-fuel home heating system and is the most common type of heat pump.

Residential Rebate - \$300.00:

- Same qualifications/restrictions as for the geothermal systems.

Commercial Rebate - Bill Credits:

- Same qualifications/restrictions as for the geothermal systems
- Paid out as bill credits over first 12 months of operation
- \$20/ton with a maximum of \$5,000

Low-Interest Loans

- 5 year loan term
- 6% annual interest rate
- Loan amount limited to 80% of the installed cost after any rebates
- Maximum of \$10,000 may be borrowed
- No late payments to NWEC during the previous 12 months
- Required documentation list on following page