



A Touchstone Energy® Cooperative 

04125 State Route 576
Bryan, Ohio 43506
Phone 419-636-5051
www.nwec.com

A 30 AMP CURRENT LIMITER HAS BEEN INSTALLED ON YOUR METER BASE

Instead of COMPLETELY disconnecting your electric service, North Western Electric Cooperative has curtailed your electric consumption by installing a device that limits the amount of electrical power you can use at any one time. This action was taken because your electric energy bill is past due, and you have not made arrangements for payment or kept a previous payment arrangement. When satisfactory arrangements for payment of your electric energy bill are made, your service will be restored to full capacity.

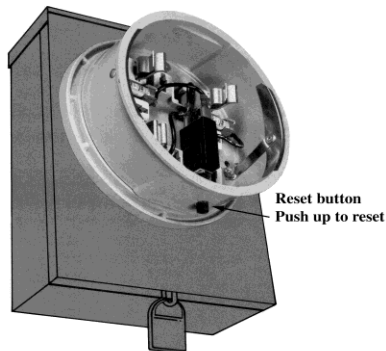
There is a \$100 charge to have the limiter removed after normal working hours.

In order to maintain your limited service, you must do the following:

1. Remove all loads from your electric system that will exceed a total of 3600 watts (@120 volts) or 30 amps. This can be done by:
 - a. Physically disconnecting those appliances/devices.
 - b. Turning off breakers or removing fuses in your service panel.

On the reverse side of this sheet, various appliances and the typical wattages/amperages of each are listed to help you determine which appliances/devices you may be able to operate.

2. If the load exceeds the rating of the limiter, the device will operate and interrupt your total electrical service.
3. If you wish to restore your limited service capacity, you must do the following:
 - a. Reduce your electric load lower than 30 amps.
 - b. Go to your electric meter base, wait two minutes, pull down, then push up on the reset button on the bottom of the current limiter.



Any issues involving your current limiter will be handled during normal working hours.

Any tampering or damage to the meter, current limiter or its seal is a criminal act and is subject to prosecution under the Ohio Revised Code.